

Mountain Line

Heather Dalmolin
CEO and General Manager



Getting you where you want to go





Getting you where you want to go



What is Mountain Line?

Arizona's first Intergovernmental Public Transportation Authority –
A political subdivision of the state

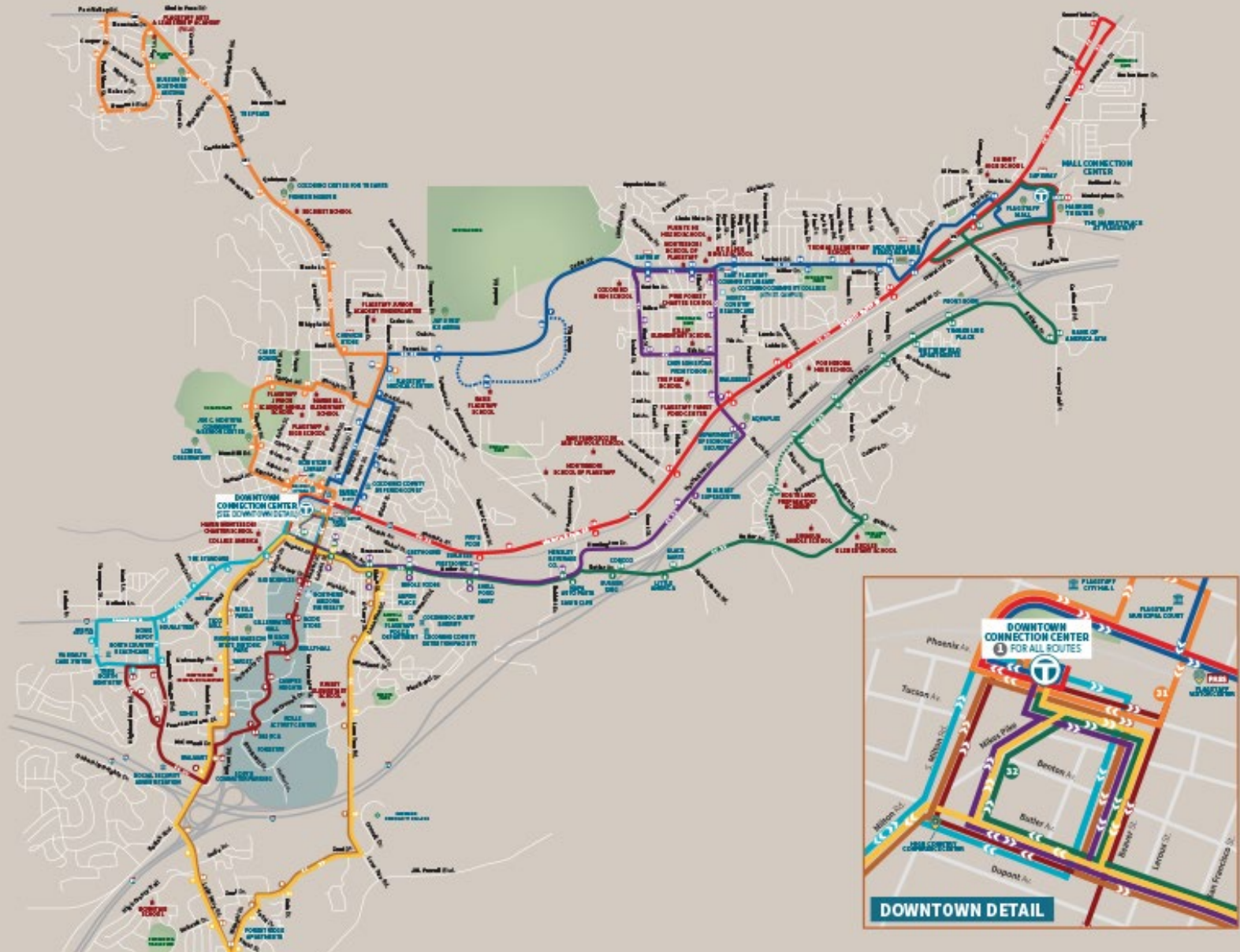
Member Agencies:



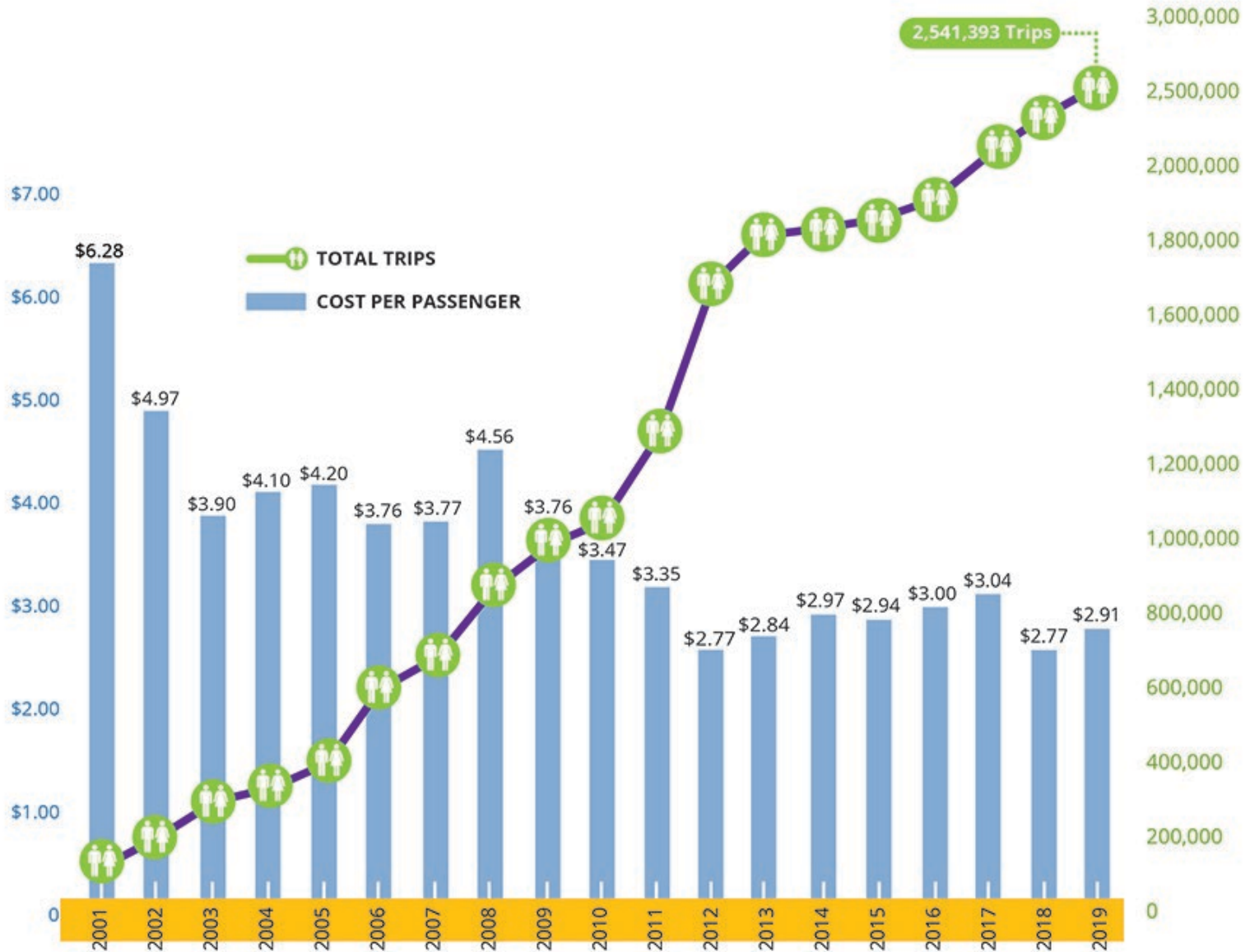
Getting you where you want to go



Route Map



19 Years and Growing Strong



Mountain Line Fleet



23

HYBRID-ELECTRIC
BUSES



6

HYBRID-ELECTRIC
ARTICULATED BUSES



8

PARATRANSIT
VANS

Facilities



ADMINISTRATIVE OFFICE

**3 SHOPS
1 BUS STORAGE
FACILITY**



CONNECTION CENTERS

**DOWNTOWN
FLAGSTAFF MALL**

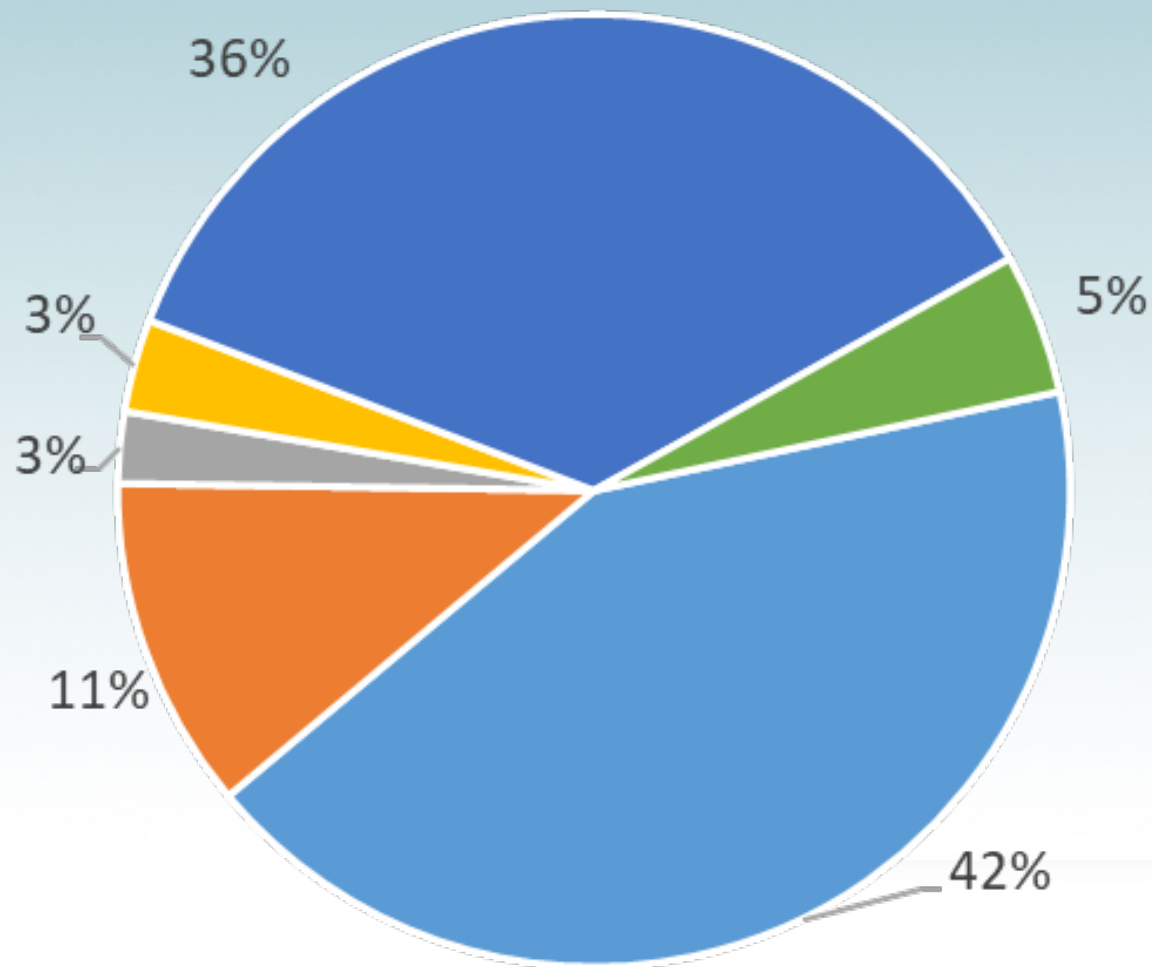


BUS STOPS

TOTAL: 167

Fiscal Year 2020 - Funding Sources

- City of Flagstaff
- Fares
- Other
- FTA Competitive
- FTA Apportioned
- ADOT Competitive



Getting you where you want to go



Partnerships with NAU

- Route 10
 - Launched in 2012
 - dedicated bus only lanes
 - 1M riders in 2019
 - 80% federally funded
 - 10% from City and NAU
 - 9 months to build



Getting you where you want to go



Partnerships with NAU

- Multimodal Improvements at SBS



Getting you where you want to go



Partnerships with NAU

- Milton – Campus Entry Study



Getting you where you want to go



Future of Mountain Line



BRT TOOLBOX

Operational Improvements

Dedicated Bus Lane and Bus Lane Enhancement

Technology

Transit Signal Priority and Queue Jumps

Wider Station Spacing

Off-Board Fare Collection

Multi-Door Boarding

Customer Amenities

Enhanced Stations

Real-Time Information

Multi-Door/Level Boarding

Rapid Transit Vehicles/Branding

Bike and Pedestrian Connections

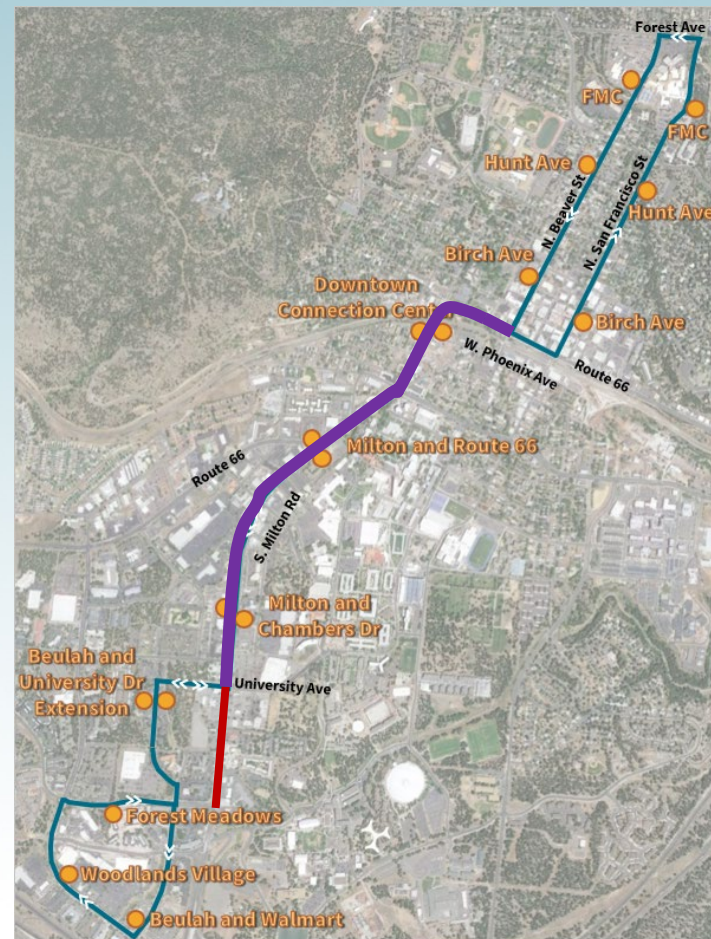


Milton and US180 Corridor Master Plans (CMP)

- Two unique projects with different boundaries
 - Overlap for 1.5 miles on Milton Rd.
- Joint stakeholder discussions and decision-making
- Result will be one recommended alternative



Bus Rapid Transit (BRT)

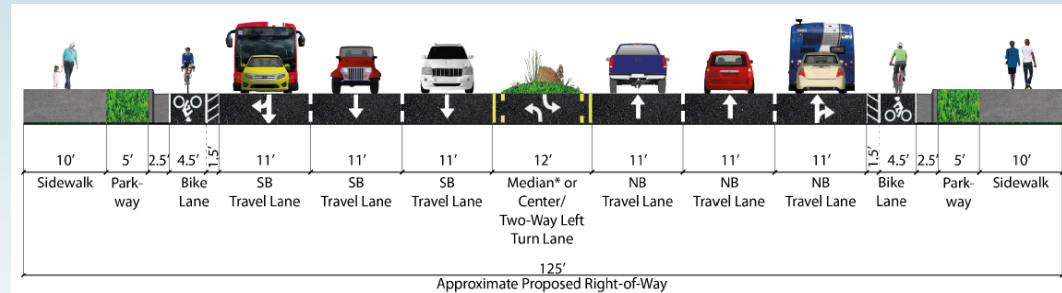


Getting you where you want to go

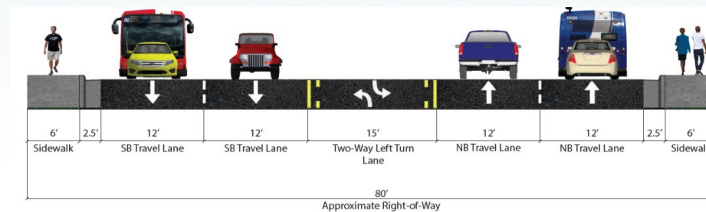


Milton CMP Final Ranking

1: Alternative 5



2: No Build Hybrid



Getting you where you want to go



New Downtown Connection Center

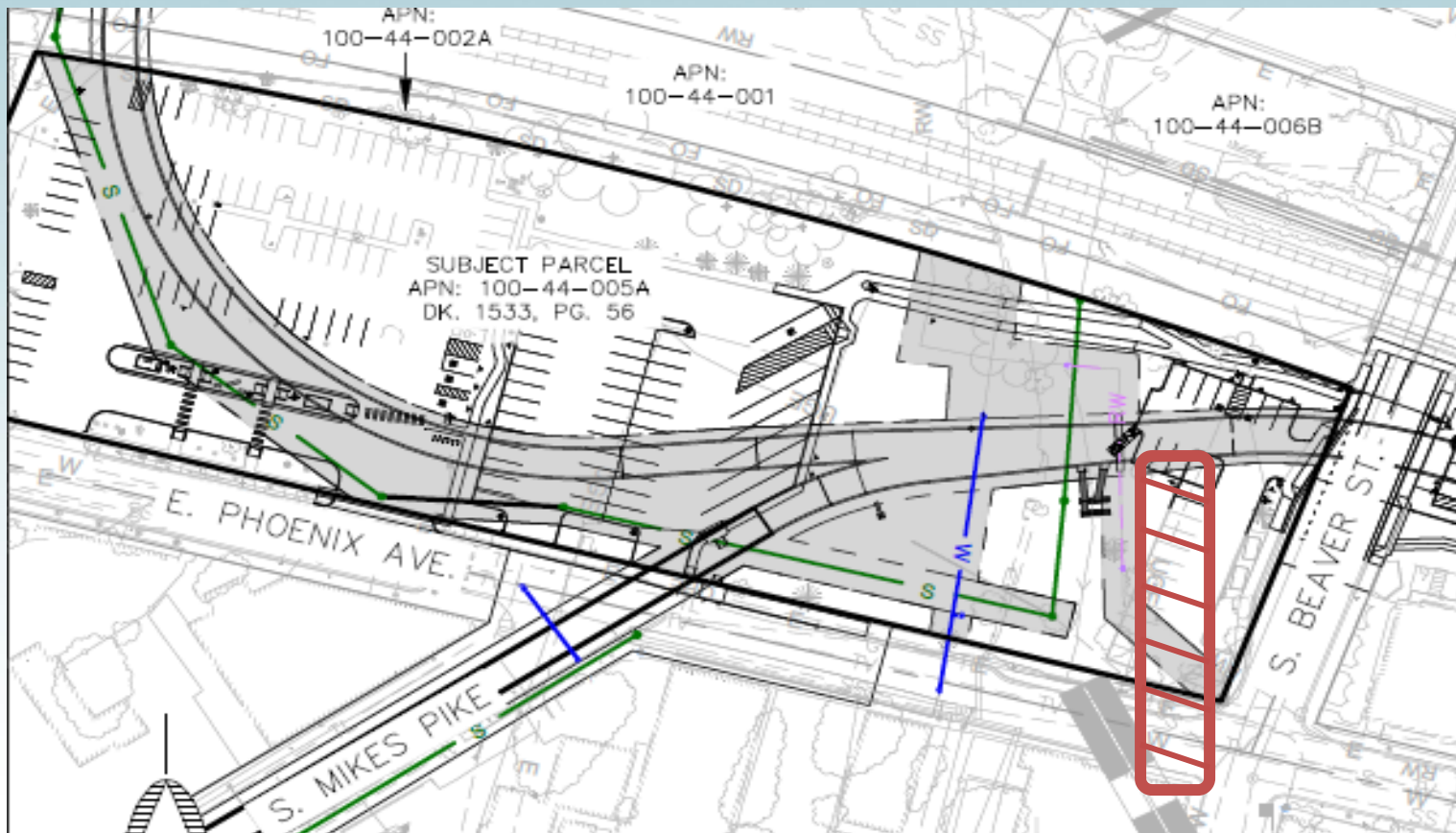
Future of Mountain Line



	2008	2019
Total Annual Riders	1,000,000	2,500,000
Routes	6	10
Buses	30'	35' and 60'
Buses per day	158	355

getting you where you want to go

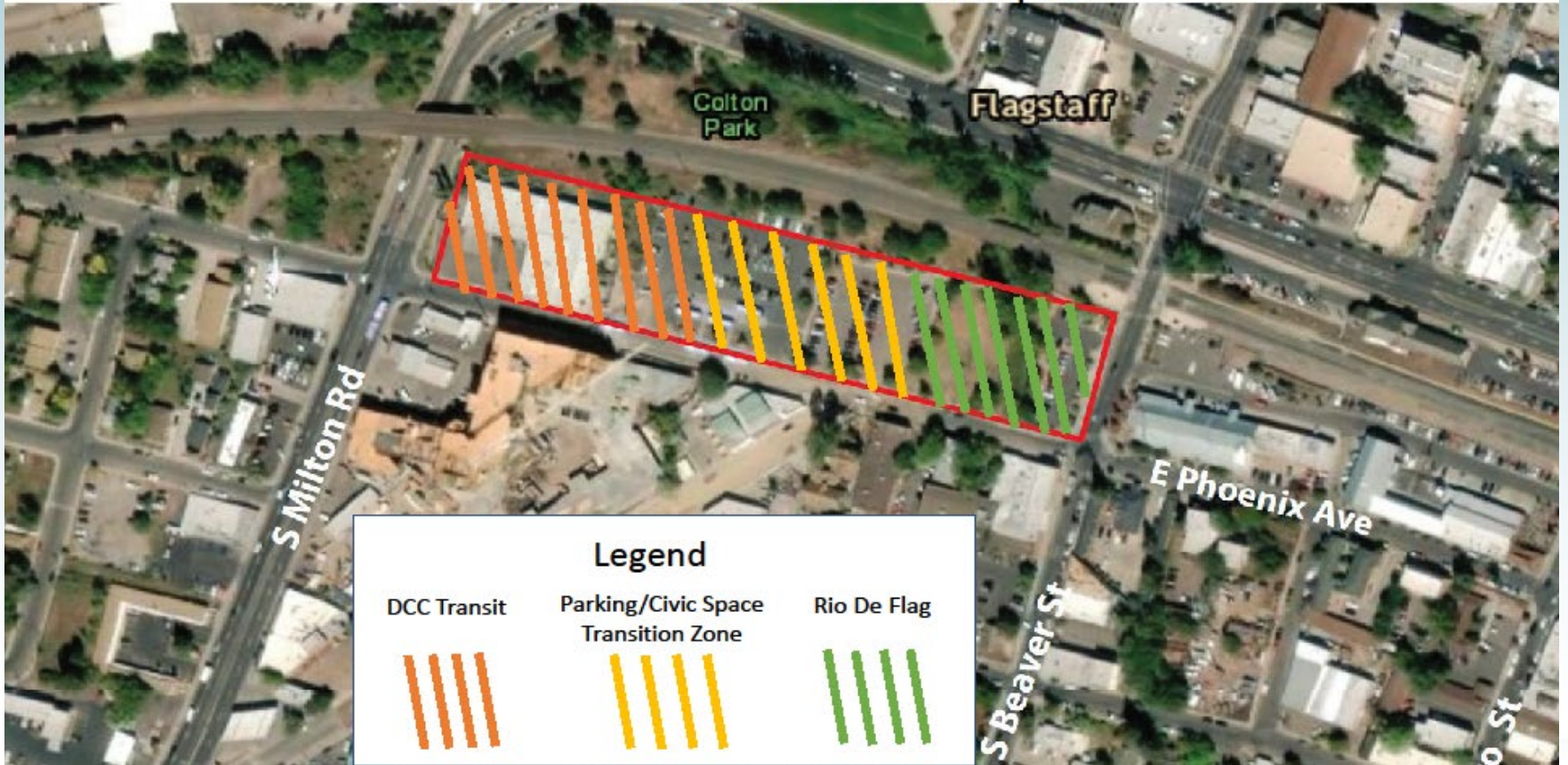




Getting you where you want to go

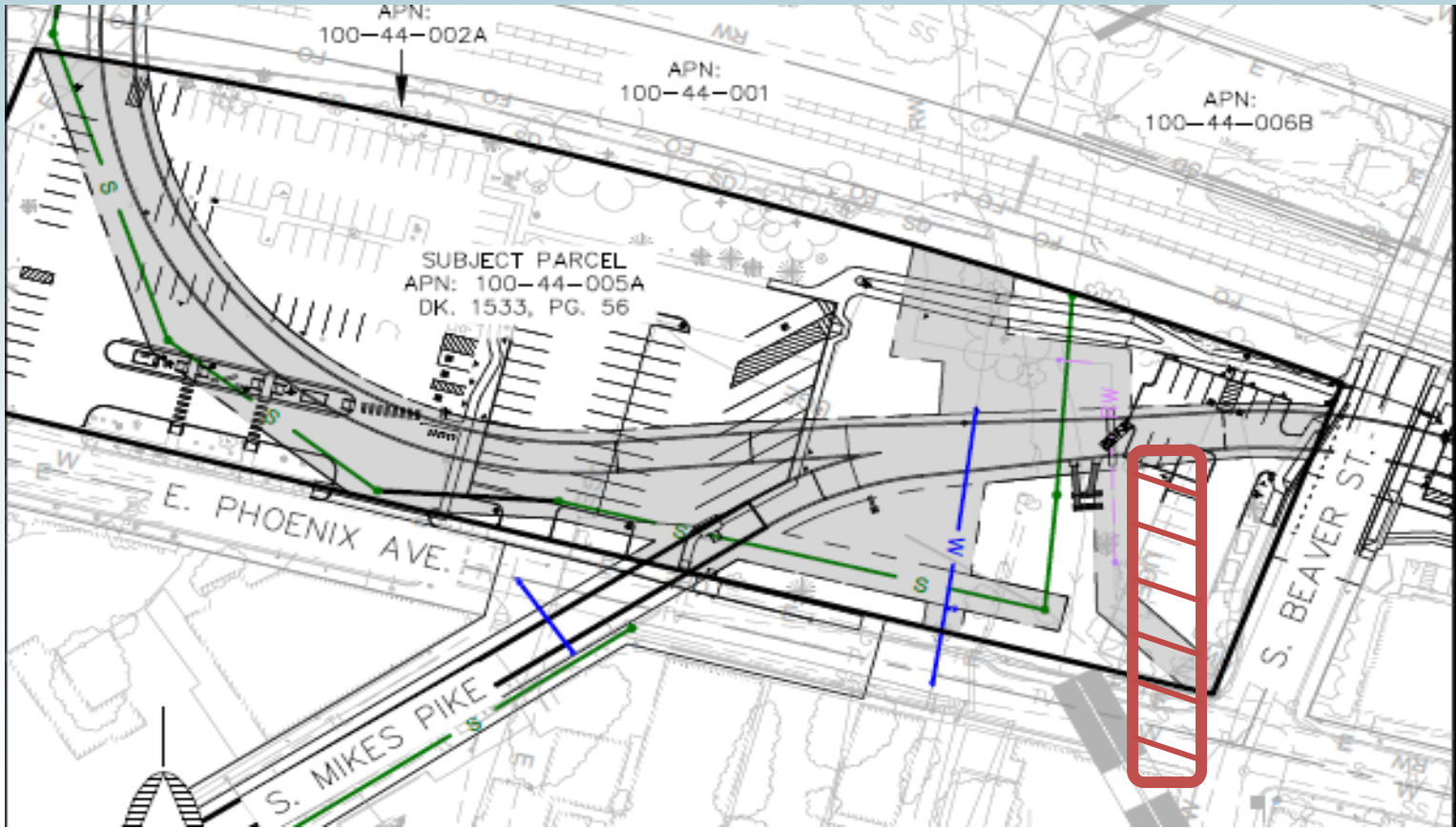


Downtown Connection Center – Site Option



Getting you where you want to go

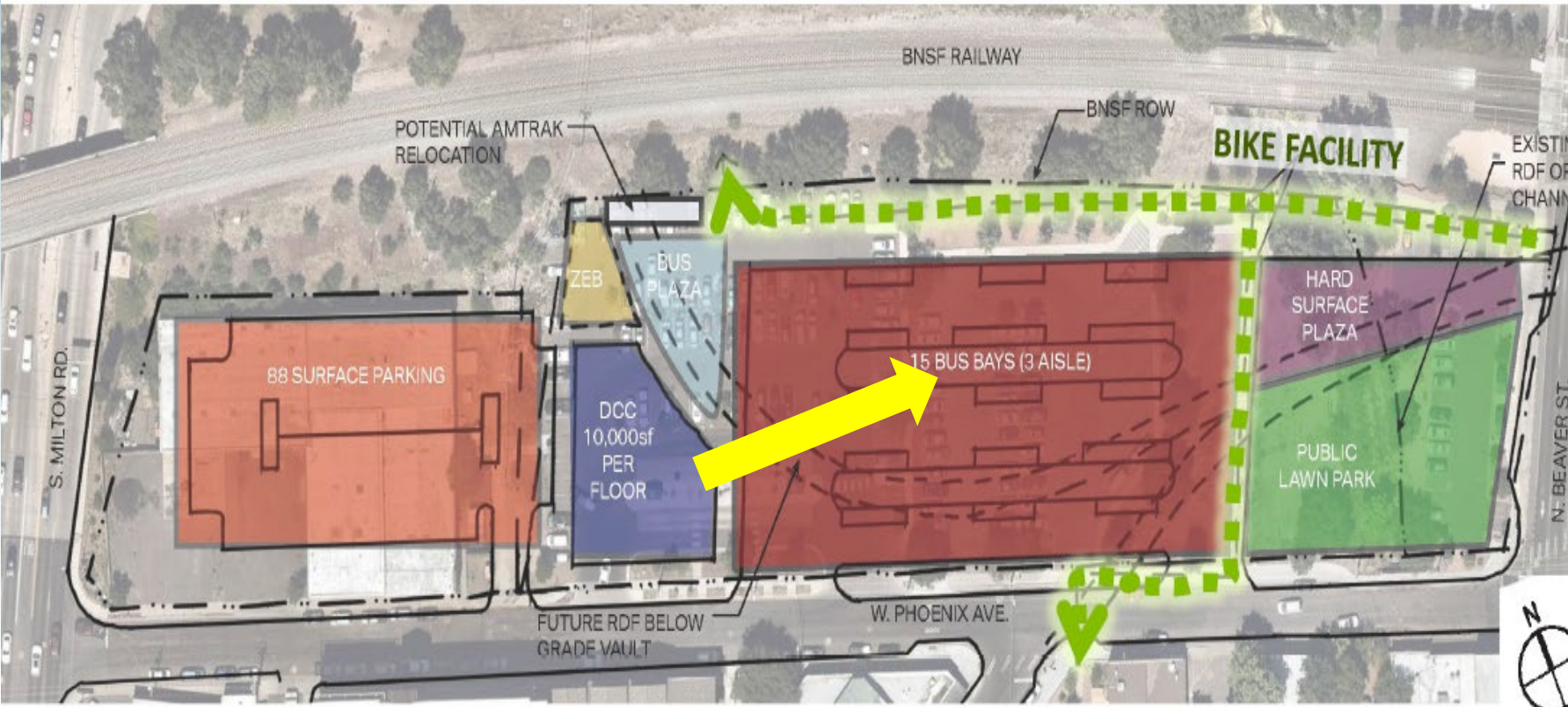




Getting you where you want to go



Basic Site Options



Getting you where you want to go





Mountain Line is conducting a Zero Emissions Bus Transition Plan to determine the next generation of technology that would be best for the agency.

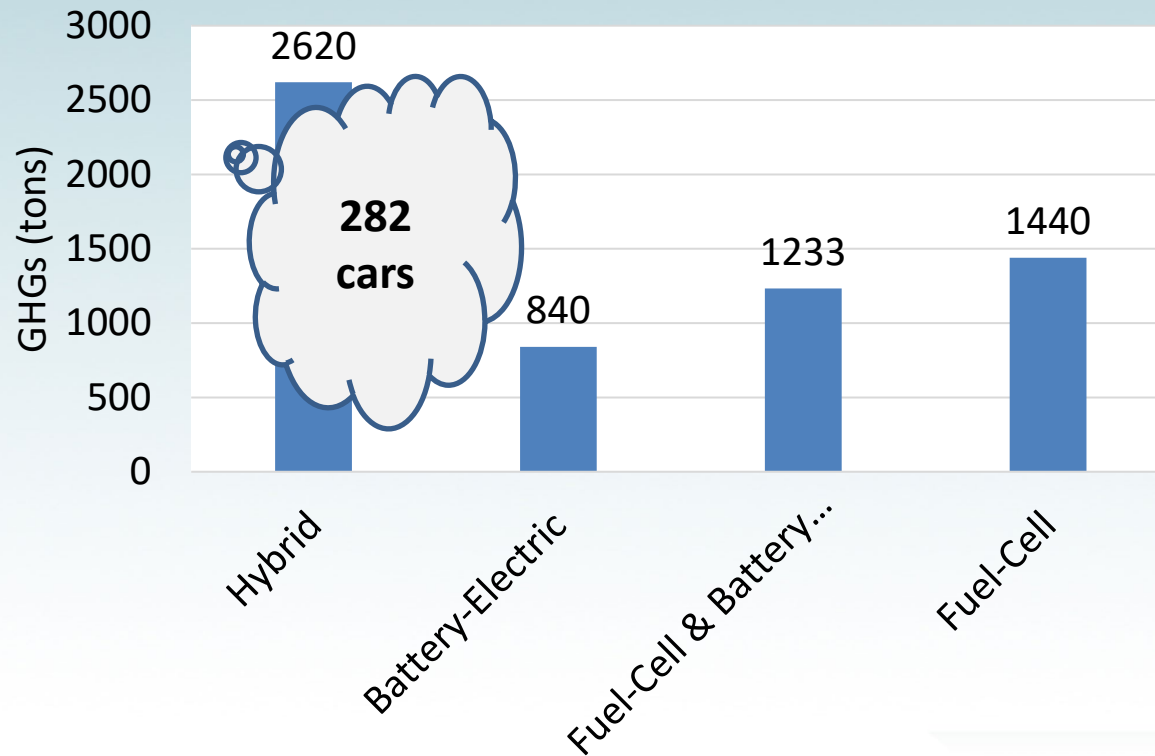
Received federal grant funding for the purchase of two zero emissions buses.

Zero Emissions Bus Transition Plan

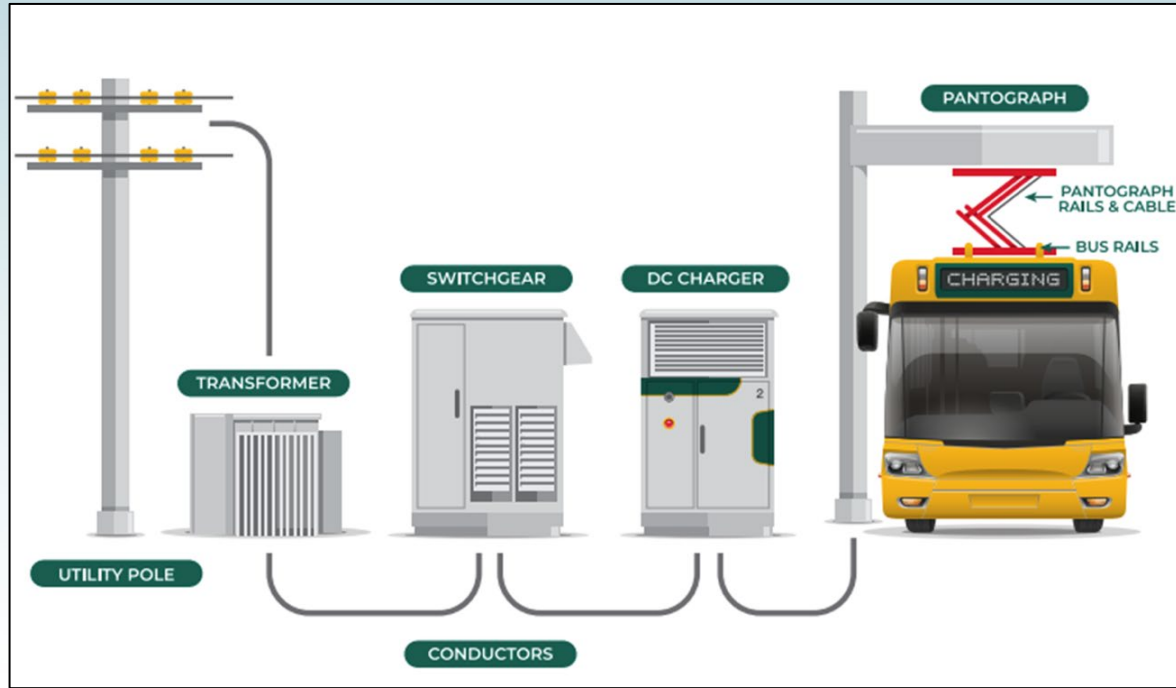
- Examine how fleet technologies might impact
 - Service provision
 - Emissions
 - Cost



Well-to-Wheel GHG Emissions Full Fleet Transition



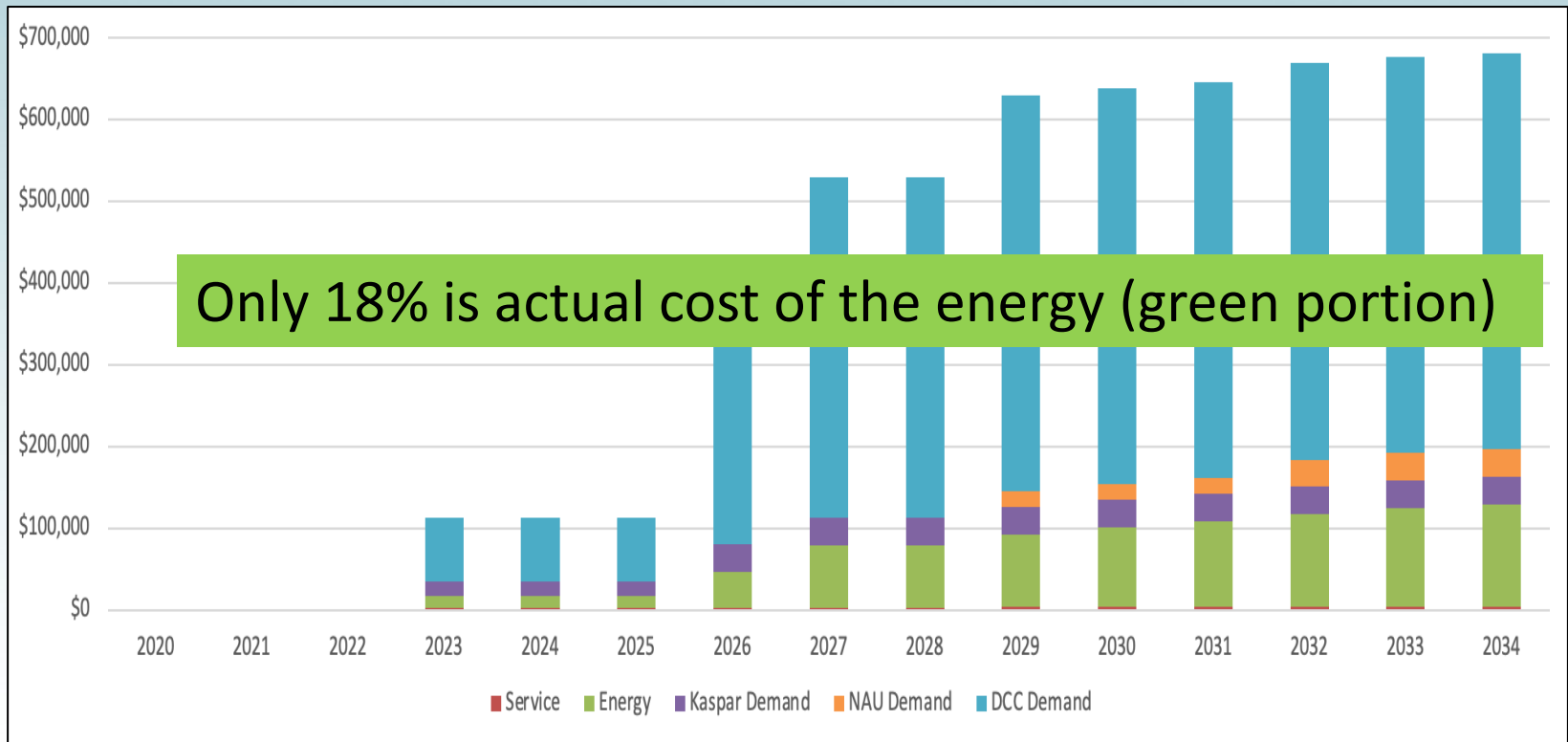
Charging Infrastructure



Getting you where you want to go



APS Rate Structure & Electrical Costs



Getting you where you want to go



Learn More

- www.mountainline.az.gov
- Board of Director meetings: 3rd Wednesday of each month
 - <https://www.youtube.com/user/FLGMountainLine>
- <https://mountainline.az.gov/about-us/reports-plans/>



Getting you where you want to go





Getting you where you want to go



Thank you
hdalmolin@mountainline.az.gov